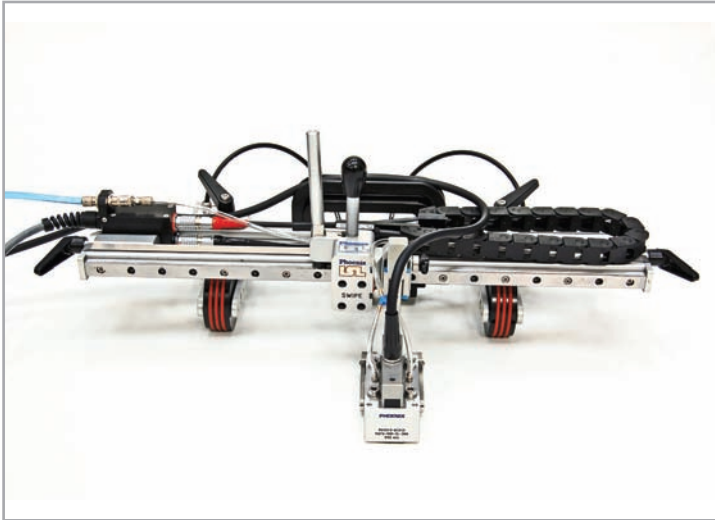
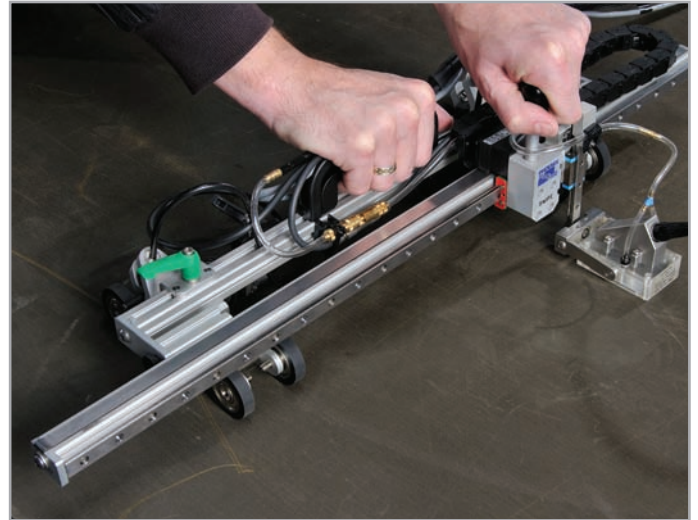


Swipe

Manual X-Y Scanner



Swipe scanner



Swipe scanner performing C-Scan composite inspection

Features

- Interchangeable swipe arms available from 400mm up to 800mm
- Dual axis encoding
- Unlimited scan length (rolling axis)
- Quick release brake locks rolling axis to maintain position during swipe scan
- Three button junction box to start, pause and save scans
- Quick release handles
- For use on ferritic and non-ferritic material

Swipe from Phoenix ISL is a two axis manually operated X-Y scanner. It enables quick C-Scan inspection of flat or curved components with unlimited travel in one direction. It is suitable for inspection with ultrasonic phased array, conventional pulse-echo or eddy current techniques.

The Swipe scanner is fully encoded on both axis and can be configured to operate with any probe and wedge combination.

The innovative design allows the swipe arm to be changed to suit the coverage needed from 400mm up to 800mm. The wheels allow unlimited scanning in the rolling direction.

The scanner incorporates a quick-release brake to ensure stability whilst performing a scan. Also included is a three button junction box that can be configured to start, pause and save scans providing the user with more control without the need to leave the scanner.

Scanner Specification

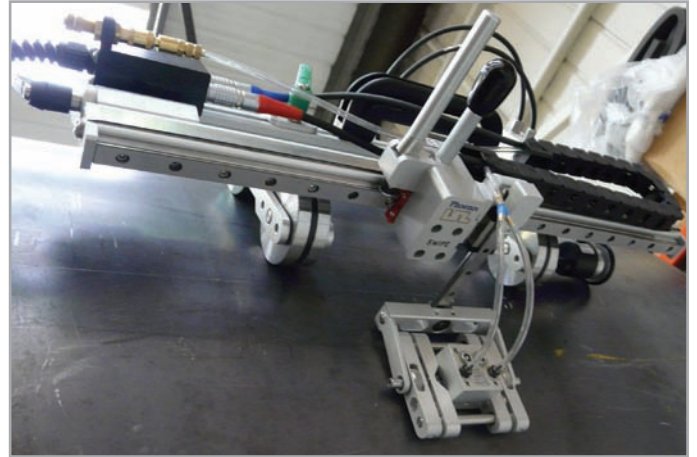
- Weight: Max. 5kg
(dependent on configuration)
- Encoder resolution: X = 10 steps/mm
 Y = 1000 steps/mm
- Encoder connector: Any

Belt Configuration Chart

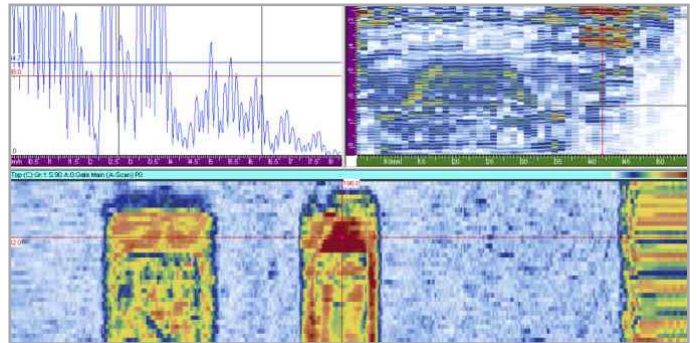
Model	Length (X) mm (in.)	Width (Y) mm (in.)	Height (Z) mm (in.)
Swipe 400	unlimited	400 (16)	155 (6.2)
Swipe 600	unlimited	600 (24)	155 (6.2)
Swipe 800	unlimited	800 (32)	155 (6.2)

Benefits

- User-friendly scanner, allows for quick, effective setups
- Operates on any material (magnetic wheels available)
- Operates in any orientation
- Can be used with any manufacturers probes, wedges and instrumentation



Swipe with magnetic wheels



Phased Array data collected using the Swipe scanner with a 64 element phased array probe

Accessories

- 4 x magnetic wheels - for operation on ferritic material
- 1 x encoder junction box with operator buttons and 5m cable: enables scans to be started, paused and saved from the scanner
- 1 x phased array toolpost - provides a stronger loading of the probe onto the part surface
- 1 x custom probe base - different widths available to suit any probe or wedge
- 1 x couplant delivery pump - automated or manual versions available

Standard Swipe Scanner Kit

- Swipe scanner frame and 400mm arm
- 1 x Brake handle
- Cable management
- 1 x 40mm phased array toolpost to hold phased array/pulse-echo wedge
- 2 x encoders with 5m cable
- Irrigation tubing and accessories
- Protective carry case

