



DR17

Technical Specifications

Panel - Technical specifications

Sensor **Wide quantization depth with low noise level**

Panel	TFT with photodiode
Scintillator	GOS (CsI optional available)
Pixel matrix	2560 x 3072 pixels
Pixel pitch	140 μm
Greyscale	16bit



Mechanical **Stable and Reliable AED Function**

Size	400 x 470 x 17 mm (14" x 17")
Active area	358 x 430 mm
Weight	4.2 kg (9.3 lbs.)
Dead space	8 mm bottom / 10 mm right side
Detachable handle	Portrait and landscape (two sides)

Communication **High speed wireless transmission with 3 antennas**

Status display	Wi-Fi, LAN and battery indicator
Wireless data I/F	802.11n/ac Wifi standard at 2.4 & 5 GHz
Fast initial setup time	15 seconds only
Image acquisition time	Wired: 1.5 s / Wireless: 3 s



Imaging performance **Outstanding image quality**

Limiting resolution	3.5 lp/mm
Image acquisition time	Wired: 1.5 s / Wireless: 3 s



Environmental **Excellent temperature stability**

Ingress protection	Water resistant and dustproof (IP67)
Operating environment	-20°C - +50°C



Power **Long battery life**

Battery	Rechargeable Li-Ion battery (hot swappable)
Battery charger	External two bay charger 100 – 240 V AC 50/60 Hz
Operating time	Up to 8 hrs. capturing



Set content

Digital image detector, 4 pcs batteries, battery-charger, holder



X-ray Sources - Technical specifications



GE XR-150 new version



GE XRS-3 new version

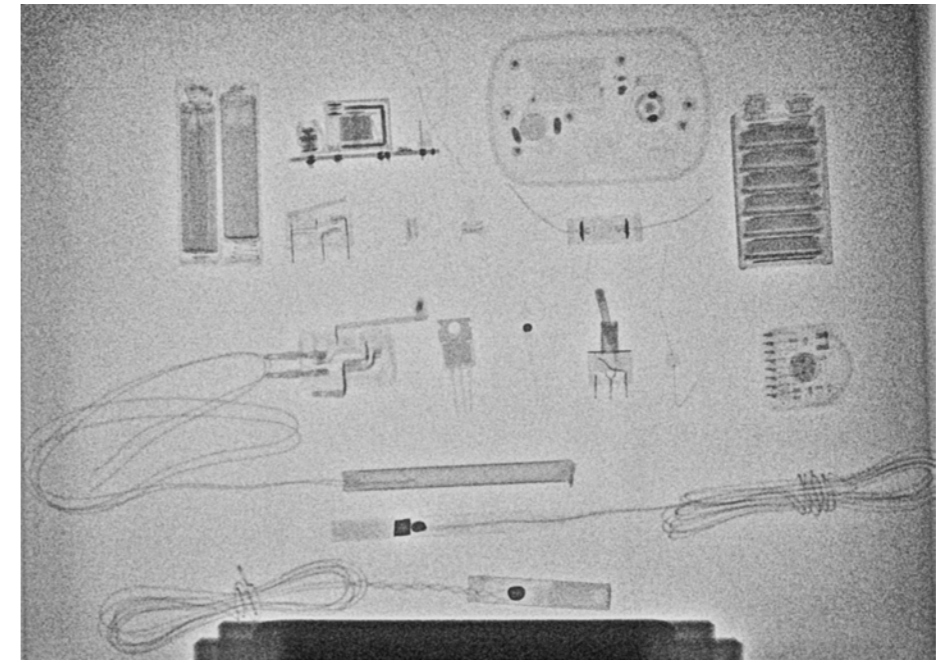
Mechanical

External dimensions	231 mm x 77 mm x 104 mm	361 mm x 108 mm x 148 mm
Weight	2.2 Kg (4.9 lbs.) with battery	5.3 Kg (11.8 lbs.) with battery
Maximum photon energy	150 KVP	270 KVP

Set content

GE generator, transport case, 2pcs batteries, manual trigger cable, battery-charger, manual

i GE XR200, XRS-4 and other continuous potential sources are available on request



Penetration of 20mm of steel from 80 cm distance with 10 pulses using the GE XRS-3

Hand held transmitter for X-ray source

The VCsecurity wireless hand held X-ray generator transmitters allow you to fire the X-ray source without the need of an Integrated Control Unit (ICU) or cumbersome hard wires.

These small and lightweight transmitters allow for quick tactical short-range operations when a lightweight and a small package is required.

The system has a built in safe and arming switch that provides safe firing of the X-rays and ensures that there are no misfires.

The devices are rugged and allow long range wireless operation from a safe distance.

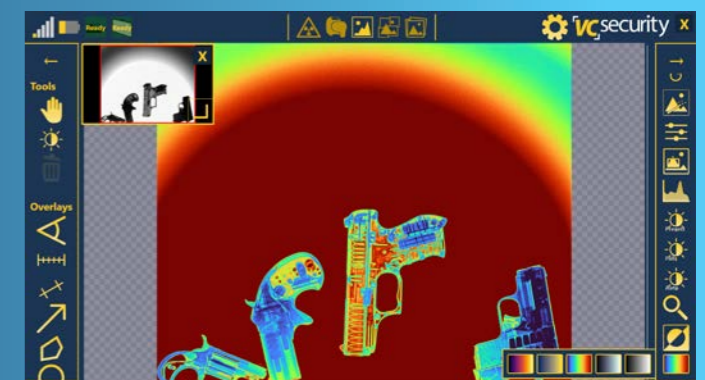
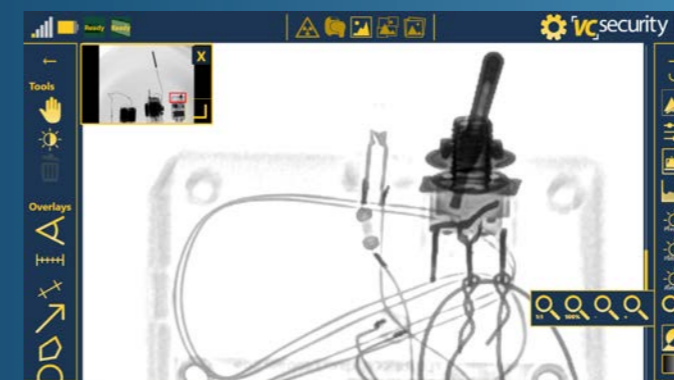
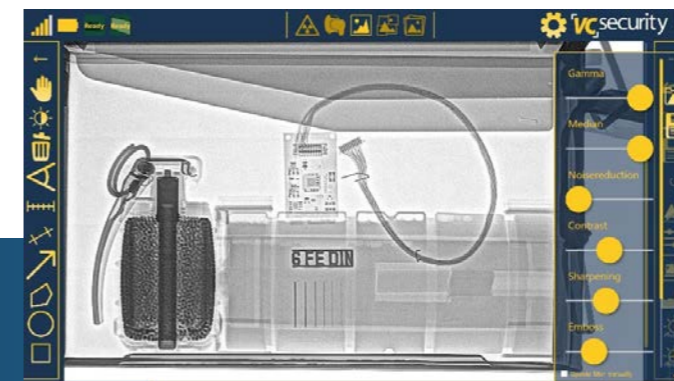
Specifications

- › Direct wireless control of all functions of the X-ray source
- › Pulse counting, rounds and delay time
- › No elevation of the X-ray source
- › Safe and arming with firing switch
- › Attaches to picatinny rails on Golden X-ray



Security Software - Technical specifications

- › High resolution and image enhancement filters for advanced visual inspection
 - › QuickEnhancer applying sophisticated filters automatically
 - › Advanced noise reduction
- › One pulse image, advanced emboss, window leveling, contrast and more
- › Manual and automatic stitching tools for stitching multiple images
- › Comprehensive measurement toolbox and decision assistance functions
 - › Measurement tools, angle, grid option, annotations, pseudo color
- › Material discrimination through Dual-Energy filter
 - › Differentiation between organic and inorganic material
- › Gallery, archiving options and integrated mission log archive
 - › Worldwide service via online help, system is supported over an online connection



X-ray Controller Options

- Standard
- Semi rugged
- Fully rugged
- MILSPEC
- Laptops and tablets
- Getac
- Panasonic
- Dell
- Logic



eBox - Technical Specifications (image control unit)

- › Wireless, wired or hybrid communication between notebook / tablet and detector
- › 400m line of sight (up to 1.500m with optional Repeater)
- › Up to 6 hrs. of operation with internal battery
- › Unlimited operation with AC main supply and parallel battery charging

Set content

- › eBox unit, antennas, charger, cable set (incl. operation cable on a rugged reel with rugged connectors)
- Full system packed in a transport case with a backpack option



Rugged connector



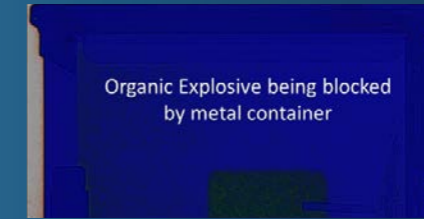
Compact transport case



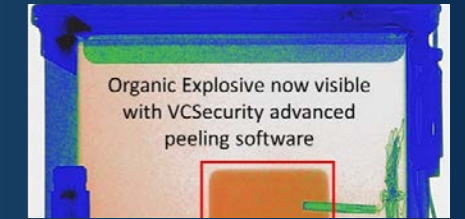
Optional Accessories

Dual Energy module

- › Material-classification through Dual-Energy filter
- › Differentiation between organic, inorganic and mixed materials
- › Advanced peeling function to remove external inorganic layer



Organic Explosive being blocked by metal container



Organic Explosive now visible with VCSecurity advanced peeling software

VCSecurity's advanced Dual Energy imaging software provides you the ability to „peel“ away layers and see what is behind higher *Z_{eff}* materials. This advanced capability can help you to locate potential explosives main charges in an IED.



100-200 m fiber optical cable on reel

Fiber optical cable for wired connection between image control unit and notebook / tablet infrastructure. It allows safe working from distance under any circumstances.

Tripod set

Tripod set for mounting X-ray generator and image detector

Robot integration

Full integration with Telerob GmbH (integration with most other robot models possible)





Specifications can vary depending on X-ray equipment. Solutions can be customized in case of special requirements.

More information you can find on

vcsecurity.visiconsult.de

Contact us

security@visiconsult.de

Germany

VisiConsult X-ray Systems & Solutions GmbH
Brandenbrooker Weg 2-4
D-23617 Stockelsdorf

USA

VisiConsult X-ray Solutions Americas Corp.
1170 Howell Mill Road, Suite 300
Atlanta, GA 30318